



# *Summer 2015*



*[www.as.uky.edu/summer](http://www.as.uky.edu/summer)*



INSIDER'S GUIDE



AS.UKY.EDU/SUMMER

# A&S SUMMER 2015 COURSES

Whether you are catching up or getting ahead, A&S summer courses can address your academic needs. See your advisor about registration and any other questions you may have.

Use this Insider's Guide to see recommended courses and plan your summer schedule, or visit [as.uky.edu/summer](http://as.uky.edu/summer) to conveniently sort them to help find what you need.



## ANT 101

### **What Makes Us Human: Intro to Anthropology (3)**

Where did human beings come from? What do people share? What are some of their greatest achievements? Why can humans walk, throw things, text each other – and lie? This course explores what it means to be human by studying human societies, past and present, near and far.

FULFILLS UK CORE: SOCIAL SCIENCES



## ANT 160

### **Cultural Diversity in the Modern World (3)**

Gain an appreciation for the universe of human cultural practices and what it is about culture that makes different groups of people unique. Understand what causes stereotypes, ethnocentrism and conflicts between groups. See the distinction between “race,” ethnicity and racism. Gain a deep knowledge of selected cultures from around the world.

FULFILLS UK CORE: GLOBAL DYNAMICS



## AST 191 & 192

### **The Solar System | Stars, Galaxies & The Universe (3)**

Two courses emphasizing the nature, origin, and evolution of planets, satellites, and other objects in the Solar System. Topics also include historical astronomy, the “naked eye” phenomena of the sky, and modern solar system discoveries made by spacecraft.

AST 191 FULFILLS UK CORE: NATURAL SCIENCES

# DATES TO KNOW:

PRIORITY REGISTRATION	SUMMER I	SUMMER II
March 30 - April 21	4-Week Term May 12 - June 9	8-Week Term June 11 - August 6
	Registration Window April 28-May 4	Registration Window April 28-June 3

For more information visit: [as.uky.edu/2015summersessions](http://as.uky.edu/2015summersessions)

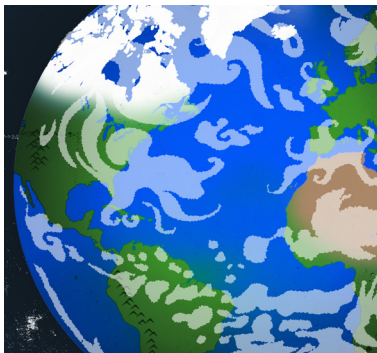


CLA 135

## Greek & Roman Mythology (3)

Learn about the ancient stories of the Greek and Roman gods and heroes and why they are still popular today in film and popular culture.

FULFILLS UK CORE: INQUIRY HUMANITIES



EES 110

## Endangered Planet: Introduction To Environmental Geology (3)

Want to save the Earth? Then learn about it first! EES 110 will take you to the ends of the Earth as you learn about earthquakes, volcanoes, landslides, floods, beach erosion, water pollution, energy resources, and more. Learn globally...act locally...take EES 110!

FULFILLS UK CORE: NATURAL SCIENCES



ENG 191-010

## Literature and the Arts of Citizenship (3)

This course examines ideas of citizenship during the first part of the Cold War period (1946 to 1965) against the background ideals of American citizenship in literature. During our brief readings, we'll learn about events in America following WWII and question whether post-World War II America lived up to the promise and vision of citizenship articulated in the literature of the 19th century.

FULFILLS UK CORE: HUMANITIES OR U.S. CITIZENSHIP



## ENG 440G-020

### Studies in British Literature: "Shakespeare Aloud" (3)

This course is founded on the notion that private and communal reading are mutually illuminating and provide a better understanding and appreciation of the characters. We will look at how different oral performances find different meanings in the same words. We will read Shakespeare's words playing with rhythm, stress, and silence. The aim of the course is to provide readers with a vital connection to Shakespeare.

*Prerequisite: ENG 330: Text and Context or consent of the instructor.*



## ENG 107-020

### Introduction to Imaginative Writing: We are our words (3)

This introductory course in creative writing will introduce us to various genre: we will play with poetry, fiddle with fiction and nonfiction, as well as grace our souls with other genre. The class will read and discuss literature in various forms to help us understand technique and voice, and practice writing and critiquing our own writing. We will often work in small groups as a workshoping method for finding our voices as writers, and for helping our classmates find theirs.

FULFILLS UK CORE: ARTS & CREATIVITY



## GEO 160

### Lands and People of the Non-Western World (3)

What are the differences between the West and the non-West? How have colonialism, imperialism, globalization created these two worlds? In this online course, we will investigate these questions, and consider current issues in the non-Western world, including environmental justice, sustainable development, human rights and gender relations.

FULFILLS UK CORE: GLOBAL DYNAMICS



## GEO 172

### Human Geography (3)

This course introduces the spatial dimensions of human activities. These activities are social, cultural, political and economic. Through readings, documentary films, discussions and writing, we will examine nature-society relations, territories, cultural landscapes and places. This course is taught online for six weeks.

FULFILLS UK CORE: SOCIAL SCIENCES



## GEO 261

### **Global Dynamics of Health and Disease (3)**

This course studies worldwide pandemics of infectious disease. Learn what caused the plague, Spanish flu and SARS, and how our immune system protects us - or not. This online course examines how and where new diseases develop, and how they diffuse across the world, and public health strategies.

FULFILLS UK CORE: GLOBAL DYNAMICS



## HIS 351-010

### **Topics in U.S. History since 1789 – U.S. Environmental History (3)**

From the Salem witch trials to the Civil Rights Movement, this course examines the evolving relationship between humans and the environment in the history of the United States. Central themes include the Columbian Exchange, competing perceptions of nature, the impacts of industrialization, ecological influences on major national events, and the emergence of the modern environmental movement.



## HIS 353-020

### **Topics in European History since 1789 – Women in War (3)**

This course provides a global history of women at war, drawing upon monographs, novels, letters, and film to understand the diverse roles that women have played in the great conflicts of the 20th century.



## HIS 353-010

### **Topics in European History since 1789 - Gender, Politics, and Society (3)**

This course traces the development of modern Europe by examining the interplay between sexual identity, political power, revolution, and war. Particular emphasis is placed upon a series of case studies that speak to the intersection between sex, power, culture, and politics in the history of Europe.



### JPN 321

#### **Intro to Japanese Culture, Meiji (1868 To Present) (3)**

Study developments in Japanese culture from the late 19th century to the present. We will discuss how Japan became an international power, shifts in social class and gender, World War II and recovery and popular culture, music, art and literature

FULFILLS UK CORE: GLOBAL DYNAMICS



### PHI 100

#### **Introduction to Philosophy: Knowledge and Reality (3)**

This course is an introduction to the philosophical problems that have bewildered many thinkers throughout the ages. As such, it is primarily concerned with metaphysics (the study of the nature of reality) and epistemology (the study of knowledge). By the end of the term, students will have cultivated what is perhaps the single most invaluable human gift: a sense of wonder.

FULFILLS UK CORE: HUMANITIES



### PHI 380

#### **Death, Dying and the Quality of Life (3)**

How is your life affected by the fact that you'll die some day? How does our society treat the dying and the dead? In this course, we consider philosophical views of life and death, as well as practical ethical considerations for our healthcare system and society.



### PHI 343

#### **Asian Philosophy (3)**

We will draw on classic Asian texts such as the Upanishads, the Bhagavad Gita, Confucius' Analects, the DaoDeJing and the Sayings of Buddha to explore the nature of selfhood and happiness. We will gain a deep and nuanced understand of what the self is, how the self is connected to other selves, and how the self relates to the rest of the world.

FULFILLS UK CORE: GLOBAL DYNAMICS



### PS 391

#### **Science Fiction, Metaphor and the Politics of Star Trek (3)**

Various iterations of the Star Trek universe have covered everything from race relations to the Cold War and McCarthyism, through the end of the Cold War to the rise of terrorism. This 6-week course will explore the use of this hit television and movie series as a form of political rhetoric and as a means of exploring social-science themes through fiction.

*Prerequisite: UN2 status*



### PS 210

#### **Introduction to Comparative Politics (3)**

What are the ways different countries practice democracy or non-democracy? What makes some countries more democratic than others, and what does it mean for citizens and political elites? Introduction to Comparative Politics will explore the different ways different countries create government institutions, and what those institutions mean for issues like equality, representation, and political freedoms.

FULFILLS UK CORE: GLOBAL DYNAMICS



### PSY 320 - 210

#### **Introduction to Forensics: Psychology & Legal Issues (3)**

This course examines the implications of psychological theory and methods for law and the criminal justice system. Topics include confessions, eyewitness testimony, the death penalty, assessing insanity, competency to testify, and criminal profiling.

FULFILLS UK CORE: U.S. CITIZENSHIP



### PSY 312 - 220

#### **Brain & Behavior (3)**

Get to know yourself from the inside out! In PSY 312, you will study how the brain and nervous system function to produce complex behavior. Topics include: Fundamental of Biopsychology, Brain Plasticity, Biopsychology of Motivation, and Disorders of Cognition and Emotion.



**SOC 101-010**

**Introduction to Sociology: Sport & Society (3)**

Introduction to the scientific study of the social life through the lens of sports and culture. Topics including intimate relationships, friendship groups, families, education, politics, economic arrangements, organizations, crime, inequality (such as race, gender, and class) will be explored through examples and assignments related to professional sports, college athletics, youth sports, and leisure activities.

FULFILLS UK CORE: QUANTITATIVE FOUNDATIONS



**SOC 350-020**

**Topics in Sociology: Serial Killing (3)**

This course is designed to provide students with an in-depth examination of the serial killers among us. It focuses on the myths and stereotypes that have evolved from mass media and public efforts to find explanations for the relatively rare phenomenon of serial murder. Case studies are used to introduce several serial killers that have plagued the streets of America and abroad.



**SPA 151**

**Elementary Spanish I (3)**

This course is designed to introduce basic modes of communication in Spanish. The emphasis is on everyday language which the students will learn by applying essential grammatical structures to vocabulary. Both listening and reading comprehension are stressed.



**SPA 102**

**Elementary Spanish II (3)**

A continuation of SPA 101.

*Prerequisite: SPA 101 or consent of the department and placement test.*



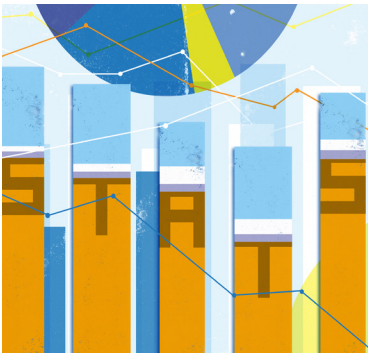


### SPA 210

#### **Spanish Grammar and Syntax (3)**

Introduction to advanced Spanish Grammar and Syntax and development of Spanish vocabulary and writing skills. Concurrent enrollment in SPA 211 is encouraged.

*Prerequisite: SPA 202, SPA 203 or equivalent.*



### STA 210

#### **Introduction to Statistical Reasoning (3)**

Increase your statistical literacy and get a UK Core course checked off! Mostly non-mathematical encounter with a host of statistical ideas and influences that are a part of our daily lives. Available face-to-face or online.

FULFILLS UK CORE: STATISTICAL INFERENCE REASONING



### STA 291

#### **Statistical Methods (3)**

Trade a little summer tee time for a t-test. Immersion in the basic methods that define elementary statistical inference and regression. Great way to acquire some hands-on statistical computing skills. Offered face-to-face or online.

FULFILLS UK CORE: STATISTICAL INFERENCE REASONING



### UKC 310-020

#### **The Environment on Film (3)**

How humans shape their environments and their environments shape them - from the perspective of popular film. From Wall-E to Wild, we explore the diverse ways of defining our relationship with the environment.

FULFILLS UK CORE: INQUIRY IN THE SOCIAL SCIENCES



**WRD 203**  
**Business Writing (3)**

Instruction and experience in writing for business, industry, and government. Emphasis on clarity, conciseness, and effectiveness in preparing letters, memos, and reports for specific audiences.

*Prerequisite: Completion of University Writing requirement or new general education communications (6 hr) sequence.*

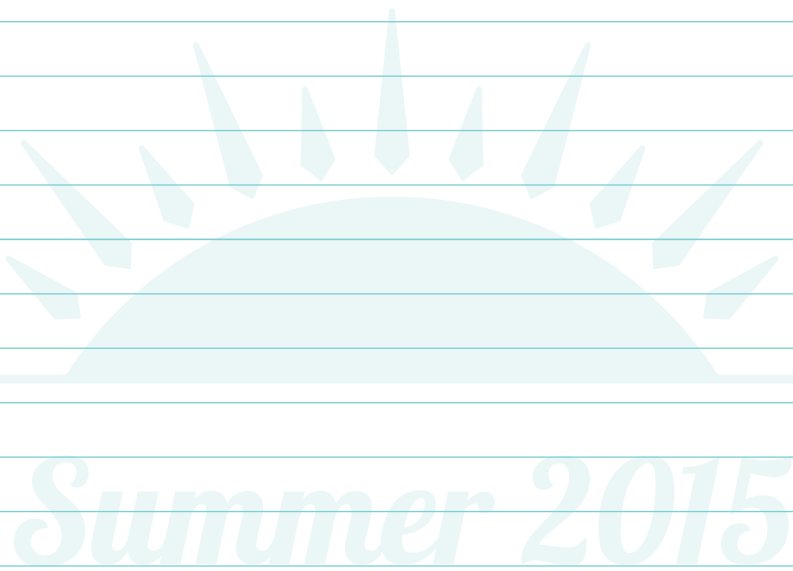


**WRD 204**  
**Technical Writing (3)**

Instruction and experience in writing for science and technology. Emphasis on precision, clarity, and conciseness in preparing rhetorically effective letters, proposals, reports, and presentations for specific audiences.

*Prerequisite: Completion of Composition and Communication requirement.*

NOTES:



NOTES:



*Summer 2015*

# 2015 A&S SUMMER COURSES

## SUMMER I

Online  
 300+  
 Language Courses  
 UJK Core - Comp & Comm  
 UJK Core - Comp & Comm I  
 UJK Core - Comp & Comm II  
 UJK Core - Global Cult & Dynamics  
 UJK Core - Humanities  
 UJK Core - Nat. Phys. & Math  
 UJK Core - Quantitative Found  
 UJK Core - Social Sciences

Online	300+	Language Courses	UJK Core - Comp & Comm	UJK Core - Comp & Comm I	UJK Core - Comp & Comm II	UJK Core - Global Cult & Dynamics	UJK Core - Humanities	UJK Core - Nat. Phys. & Math	UJK Core - Quantitative Found	UJK Core - Social Sciences	Course
											AAS 235-010: Inequalities In Society
	•										AAS 360-010: Race/Sports In America
		•									AIS 101-010: Elem Mod Standard Arabic
											ANT 160-010: Cultural Diversity In The Modern World
•	•										ANT 311-210: Anthropology Of Globalization
	•										ANT 321-010: Intr Japan Cltr, Meiji (1868) To Present
	•										ANT 585-010: Fld Lab-Archeol Research
•											BIO 103-210: Basic Ideas Of Biology
											BIO 199-010: Res Experience In Bio
•											BIO 208-210: Principles Of Microbio
•	•										BIO 303-210: Introduction To Evolution
	•										BIO 304-010: Principles Of Genetics
	•										BIO 315-010: Intro To Cell Biology
	•										BIO 395: Research In Biology (multiple sections available)
											CHE 199: Res Exp In Chemistry (multiple sections available)
	•										CHE 395: Independent Work In Che (multiple sections available)
		•									CHI 101-010: Beginning Chinese I
	•										CHI 395-010: Independ Work In Chinese
	•										CHI 495G-010: Adv Independent Work In Chinese
•											CLA 131-210: Med Terminol Greek/Latin
											ENG 191-010: Literature And The Arts Of Citizenship
•											ENG 280-210: Introduction To Film
	•										ENS 395-010: Independent Work
		•									FR 101-010: Elementary French
		•									FR 201-010: Intermediate French
	•										FR 395-010: Independent Work In French Stds
	•										GEO 399-010: Internship In Geography
	•										GEO 560-010: Independent Work In Geo
		•									GER 101-010: Basic German
		•									GER 201-010: Intermediate German
	•										GER 395-010: Indep Work In German
											HIS 105-010: His Eur Mid 17 Cent-Pres
•											HIS 121-210: War And Society, 1914-1945
											HIS 208-010: History Of The Atlantic World
	•										HIS 351-010: Tops U.s. His Since 1789: Environment
	•										HIS 353-010: Tops Euro His Since 1789: Gender Politic
	•										HIS 360-010: Race/Sports In America
	•										HIS 395-010: Independent Work
		•									ITA 101-010: Elementary Italian
	•										JPN 321-010: Intr Japan Cltr, Meiji (1868) To Present

# 2015 A&S SUMMER COURSES

## SUMMER I

•	Online	300+	Language Courses	UK Core - Comp & Comm I	UK Core - Comp & Comm II	UK Core - Comm, Cult & Citizen	UK Core - Global Dynamics	UK Core - Humanities	UK Core - Nat. Phys. & Math	UK Core - Quantitative Found	UK Core - Social Sciences	
•												LIN 211-210: Introduction To The Study Of Language
												MA 109-010: College Algebra
												MA 111-010: Intro To Contemp Math
												MA 123-010: Elem Calc & Its Applics
												PHI 100-010: Intro Phi:Knowl/Reality
												PHI 120-010: Introductory Logic
•	•											PHI 334-210: Business Ethics
	•											PHI 380-010: Death/Dying/Qual Of Life
	•											PHI 395-010: Independent Work
•	•											PHY 401G: Sp Tops Physics/Ast Elem/Middle/Hs Tchrs (multiple sections available)
•												PS 235-210: World Politics
	•											PS 372-710: Intro Political Analysis
•												PSY 100-210: Intro To Psychology
•												PSY 215-210: Experimental Psychology
•	•											PSY 313-210: Personality And Individual Differences
•	•											PSY 314-210: Social Psychology And Cultural Processes
	•											PSY 320-210: Forensic Psychology
	•											PSY 395: Ind Work In Psy (multiple sections available)
												SOC 101-010: Intro To Sociology: Sport & Society
												SOC 180-010: Global Societies In Comparative Perspec
												SOC 235-010: Inequalities In Society
•	•											SOC 342-210: Organizations And Work In Society
	•											SOC 350-710: Topics In Sociology: Crme/Jstc Intl X-Rd
	•											SOC 395-010: Independent Work
	•											SOC 399-010: Practicum In Sociology
	•											SOC 565-010: Independent Work
												SPA 101: Elem Span I (Spoken App) ( multiple sections available)
												SPA 102: Elem Span II (Spoken Ap) (multiple sections available)
•												SPA 151-210: Spanish For Health Prof
												SPA 201: Inter Span III(Spokn Ap) (multiple sections available)
												SPA 202: Inter Span IV(Spokn Ap) (multiple sections available)
	•											SPA 399-010: Fld Based/Comm Based Edu
•												STA 210: Intro To Statistical Reasoning (multiple sections available)
•												STA 291: Statistical Methods (multiple sections available)
	•											UK 301-710: Cross-Cultural Stds (Sr)
•												WRD 110: Comp & Comm I (multiple sections available)
•												WRD 111: Comp & Comm II (multiple sections available)
•												WRD 203: Business Writing (multiple sections available)
•												WRD 204-210: Technical Writing

# 2015 A&S SUMMER COURSES

## SUMMER II

	Online	300+	Language Courses	UJK Core - Comp & Comm	UJK Core - Comp & Comm I	UJK Core - Comp & Comm II	UJK Core - Global Cult & Citizen	UJK Core - Humanities	UJK Core - Nat. Phys. & Math	UJK Core - Quantitative Found	UJK Core - Social Sciences	UJK Core - Stat Inferential Reason	
•	•												A&S 350-220: Personal Strengths & Career Dev
	•												AAS 432-020: Race & Ethnic Relations
		•											AIS 101-720: Elem Mod Standard Arabic
		•											AIS 102: Elem Mod Standard Arabic (multiple sections available)
		•											AIS 201-720: Inter Mod Standrd Arabic
		•											AIS 202-720: Inter Mod Standrd Arabic
	•												AIS 311-720: Arabic For Business And Media I
	•												AIS 312-720: Arabic For Business And Media II
												•	ANT 101-020: Intro To Anthropology
•							•						ANT 160-220: Cultural Diversity In The Modern World
	•												ANT 399-020: Fld/Comm Based Ed In Ant
	•												ANT 581-020: Indep Work-Anthropology
												•	AST 191-020: The Solar System
	•												AST 310-020: Tops Astronomy And Astrophysics:Hands On
	•												AST 395-020: Indep Work In Astronomy
													BIO 148-020: Introductory Biology I
•													BIO 152-220: Prin Of Biology II
													BIO 155-020: Lab For Intro Biology I
													BIO 199-020: Res Experience In Bio
	•												BIO 395: Research In Biology (multiple sections available)
•												•	CHE 105: Gen College Chemistry I (multiple sections available)
													CHE 107-020: Gen College Chemistry II
												•	CHE 111-020: General Chemistry Lab I
													CHE 113: General Chemistry Lab II (multiple sections available)
													CHE 199: Res Exp In Chemistry (multiple sections available)
													CHE 230-020: Organic Chemistry I
													CHE 231-020: Organic Chemistry Lab I
													CHE 232-020: Organic Chemistry II
													CHE 233-020: Organic Chemistry Lab II
	•												CHE 395: Independent Work In Che (multiple sections available)
		•											CHI 102-020: Beginning Chinese II
	•												CHI 395-020: Independ Work In Chinese
	•												CHI 495G-020: Adv Independent Work In Chinese
•		•											CLA 135-220: Greek/Roman Mythology
												•	CLA 191-220: Christianity, Culture, & Society
•												•	EES 110-220: Endangered Planet Intr To Envrnmntl Geol
•													EES 170-220: Blue Planet: Intro To Oceanography
	•												EES 323-020: Fld Work In Regional Gly
	•												EES 395: Spec Problems In Geology (multiple sections available)

# 2015 A&S SUMMER COURSES

## SUMMER II

- Online
- 300+
- Language Courses
- UK Core - Comp & Comm I
- UK Core - Comp & Comm II
- UK Core - Comm, Cult & Citizen
- UK Core - Global Dynamics
- UK Core - Humanities
- UK Core - Nat. Phys. & Math
- UK Core - Quantitative Found
- UK Core - Social Sciences
- UK Core - Stat/Inferential Reason

											ENG 107-020: Introduction To Imaginative Writing (UK Core - Arts & Creativity)
	•										ENG 440G-020: Studies In British Lit:(Sr)
	•										ENS 395-020: Independent Work
		•									FR 102-020: Elementary French
		•									FR 202-020: Intermediate French
	•										FR 395-020: Independent Work In French Stds
•						•					GEO 160-220: Lnds/People Non-West Wld
•										•	GEO 172-220: Human Geography
•						•					GEO 261-220: Global Dynamics Of Health & Disease
	•										GEO 316-720: Environment And Development
	•										GEO 365-720: Spec Tops Regional Geography: Oaxaca
	•										GEO 399: Internship In Geography (multiple sections available)
	•										GEO 406-720: Field Studies In Geography: Oaxaca
	•										GEO 560-020: Independent Work In Geo
		•									GER 102-020: Basic German
		•									GER 201-720: Intermediate German
		•									GER 202-720: Intermediate German
	•										GER 395: Indep Work In German (multiple sections available)
•	•										GWS 309-220: Health, History, And Human Diversity
						•					HIS 108-020: History Of The U.S. Thru 1876
•						•					HIS 109-220: History Of The U.S. Since 1877
	•										HIS 351: Tops U.S. His Since 1789: Epidemics/Pand (multiple sections available)
	•										HIS 353-020: Tops Euro His Since 1789: Women In War
	•										HIS 395-020: Independent Work
	•										HIS 466-020: Mod Am His Wwi To Pearl Harbor 1917-1941
	•										HIS 595-020: Studies In History
		•									ITA 101-720: Elementary Italian
		•									ITA 102-720: Elementary Italian
		•									ITA 201-720: Intermediate Italian
											ITA 263-720: Intro Italian Lit, Culture, Film
•											MA 109: College Algebra (multiple sections available)
										•	MA 111: Intro To Contemp Math (multiple sections available)
•										•	MA 113: Calculus I (multiple sections available)
											MA 114: Calculus II (multiple sections available)
•										•	MA 123: Elem Calc & Its Applics (multiple sections available)
											MA 162-020: Finite Math & Its Applic
											MA 202-020: Math Prob Solv Elem Tchr
											MA 213: Calculus III (multiple sections available)
											MA 214: Calculus IV (multiple sections available)

June 11 - August 6

# 2015 A&S SUMMER COURSES

## SUMMER II

Online  
300+  
Language Courses  
UK Core - Comp & Comm I  
UK Core - Comp & Comm II  
UK Core - Comm, Cult & Citizen  
UK Core - Global Dynamics  
UK Core - Humanities  
UK Core - Nat. Phys. & Math  
UK Core - Quantitative Found  
UK Core - Social Sciences  
UK Core - Stat Inferential Reason

Online	300+	Language Courses	UK Core - Comp & Comm I	UK Core - Comp & Comm II	UK Core - Comm, Cult & Citizen	UK Core - Global Dynamics	UK Core - Humanities	UK Core - Nat. Phys. & Math	UK Core - Quantitative Found	UK Core - Social Sciences	UK Core - Stat Inferential Reason	Course
	•											MA 322: Matrix Algebra & Appls (multiple sections available)
	•											MA 398-020: Indep Work Mathematics
	•											MCL 510-020: Teaching Methods: Young & Beg. Students
	•											NES 333-020: National Exchange Studies
							•					PHI 100-020: Intro Phi:Knowl/Reality
•											•	PHI 120: Introductory Logic (multiple sections available)
	•						•					PHI 343-020: Asian Philosophy
	•											PHI 395-020: Independent Work
	•											PHI 399-020: Experiential Learning
												PHY 160-020: Physics & Astronomy For Teachers
								•				PHY 211: General Physics (multiple sections available)
												PHY 213-020: General Physics
											•	PHY 231-020: General Univ Physics
												PHY 232-020: General Univ Physics
											•	PHY 241-020: Gen University Phy Lab
												PHY 242-020: Gen University Phy Lab
	•											PHY 395: Independent Work Physics (multiple sections available)
•	•											PHY 401G: Sp Tops Physics/Ast Elem/Middle/Hs Tchrs (multiple sections available)
•							•					PS 101-220: American Government
											•	PS 210-020: Intro Comparative Pol
	•											PS 391-020: Sp Top Ps:Sci Fi Metaphr & Pol Star Trek
	•											PS 395-720: Independent Work
	•											PS 399-020: Internship In Government
•											•	PSY 100-220: Intro To Psychology
•												PSY 216-220: Apps Of Stats In Psychol
•												PSY 223-220: Developmental Psychology
•	•											PSY 311-220: Learning And Cognition
	•											PSY 395: Ind Work In Psy (multiple sections available)
	•											PSY 399-020: Fld Based/Comm Based Edu
•											•	SOC 101: Intro To Sociology (multiple sections available)
	•											SOC 350-020: Topics In Sociology: Serial Killing
	•											SOC 395-020: Independent Work
	•											SOC 399-020: Practicum In Sociology
	•											SOC 432-020: Race & Ethnic Relations
	•											SOC 439-020: Tops In Crime, Law & Deviance:Soc Of Law
	•											SOC 565-020: Independent Work
		•										SPA 101: Elem Span I (Spoken App) (multiple sections available)
		•										SPA 102: Elem Span II (Spoken Ap) (multiple sections available)
		•										SPA 201: Inter Span III(Spokn Ap) (multiple sections available)



# 2015 A&S SUMMER COURSES

## SUMMER II

Online	300+	Language Courses	UK Core - Comp & Comm I	UK Core - Comp & Comm II	UK Core - Comm, Cult & Citizen	UK Core - Humanities	UK Core - Nat. Phys. & Math	UK Core - Quantitative Found	UK Core - Social Sciences	UK Core - Stat Inferential Reason
		•								SPA 202: Inter Span IV(Spoken Ap) (multiple sections available)
		•								SPA 210-020: Spanish Grammar And Syntax
		•								SPA 211-020: Intermediate Spanish Conversation
	•									SPA 397-020: Indep Work In Spanish
	•									SPA 399-020: Fld Based/Comm Based Edu
•									•	STA 210: Intro To Statistical Reasoning (multiple sections available)
•										STA 291: Statistical Methods (multiple sections available)
•	•									STA 569-220: Applied Statistical Methods
										UK 090: Devlpmntl Univ Crs: Title To Be Assigned (multiple sections available)
										UK 100: Univ Cr:Title To Be Assigned (multiple sections available)
•	•					•				UKC 310: Hum Inquiry Ud: Sr (multiple sections available)
•			•							WRD 110: Comp & Comm I (multiple sections available)
•				•						WRD 111: Comp & Comm II (multiple sections available)
•										WRD 203: Business Writing (multiple sections available)
•										WRD 204-220: Technical Writing
	•									WRD 399-020: Internship

NOTES:



*Summer 2015*

NOTES:



*Summer 2015*



# *Summer 2015*



[facebook.com/UK.Arts.and.Sciences](https://www.facebook.com/UK.Arts.and.Sciences)



[@ukartsci](https://www.instagram.com/ukartsci)



[@UKarts\\_sciences](https://twitter.com/UKarts_sciences)



[#seesummer15](https://twitter.com/hashtag/seesummer15)



[pinterest.com/UKArtSci](https://www.pinterest.com/UKArtSci)



[www.as.uky.edu/summer](http://www.as.uky.edu/summer)

